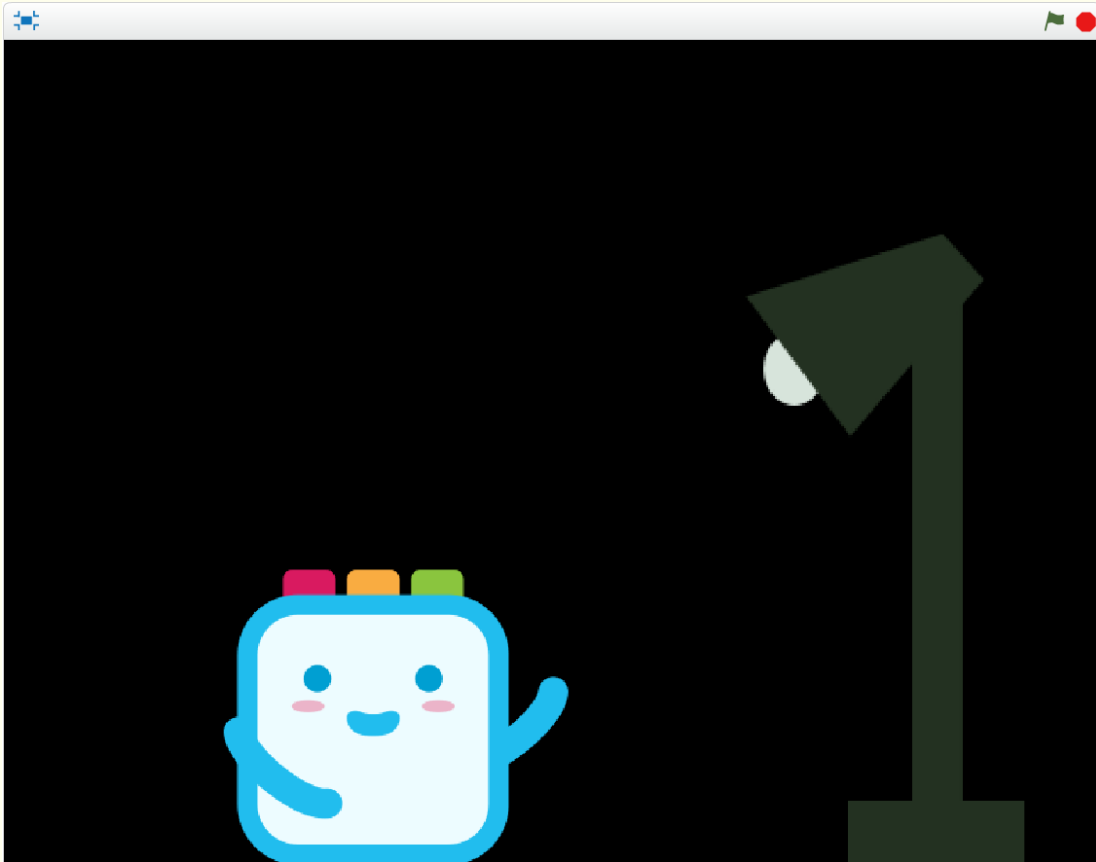


# 16

## Light Up the Dim Path

### ● Scratch Project

- Let us build the LED street light that shines the dark road.



### ● Coding Blocks To Use

- Let us build the street light using the coding blocks (LED & light sensor).



LED



LIGHT & TOUCH SENSOR



# 16

## Light Up the Dim Path

### ● Scratch Coding Mission

- Let us code the LED street light to turn on if the value of the light sensor block is less than 500 and to turn off if not.

### ● Frequently used blocks

Major blocks	Block explanation
	<ul style="list-style-type: none"><li>• This block creates conditional sentence.</li><li>• In the "[]. (hexagon)" the condition of the sentence is entered.</li><li>• Area below the condition is the list of actions.<ol style="list-style-type: none"><li>1) Start if the condition is True.</li><li>2) Area below the "Else:" is started if the condition is False.</li></ol></li></ul>
	<ul style="list-style-type: none"><li>• This calculation block compares the great and small.</li><li>• The result is shown as True or False.</li><li>• You can compare the value of the Cubroid light sensor to the certain value.</li></ul>

# 16

## Light Up the Dim Path

### ● Coding Mission To Do!

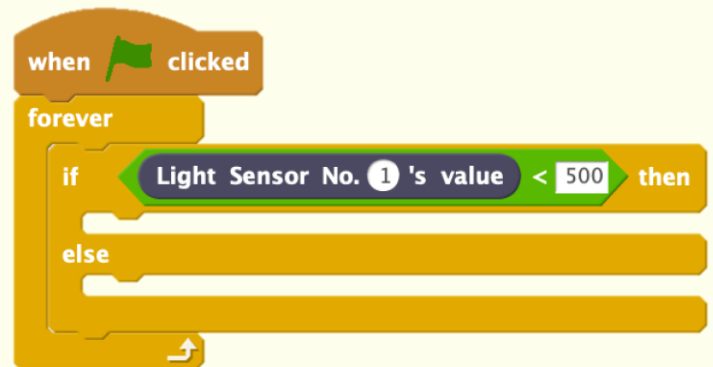
Let us build an LED street light that shines on a dark road.

- Let us code the LED street light to turn on if the value of the light sensor block is less than 500 and to turn off if not.

#### Step 1

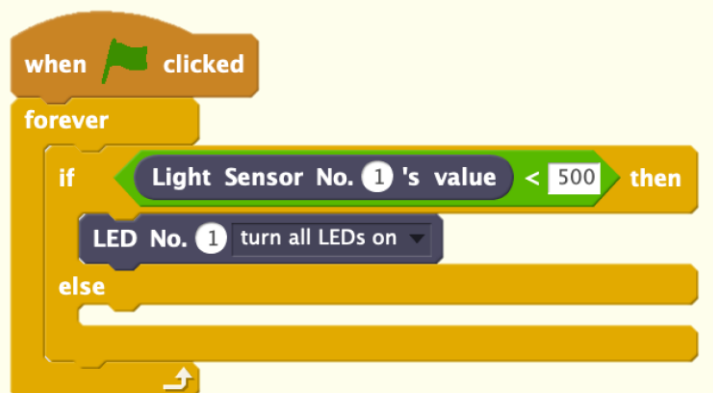
Let us create the conditional sentence that can check if the value of the light sensor is less than 500 when you click the flag.

- 1) The action is started respectively for True and False.
- 2) The conditional statement is not started only for once, and the repetition is continued without stopping.



#### Step 2

Let us code LED street lights to turn on when the condition is True.



# 16

## Light Up the Dim Path

### ● Coding Mission To Do!

Let us build an LED street light that shines on a dark road.

- Let us code the LED street light to turn on if the value of the light sensor block is less than 500 and to turn off if not.

#### Step 4

Let us code the LED street lights to turn off when the condition is False.

